

S
SPORTSWAYS



DIVING

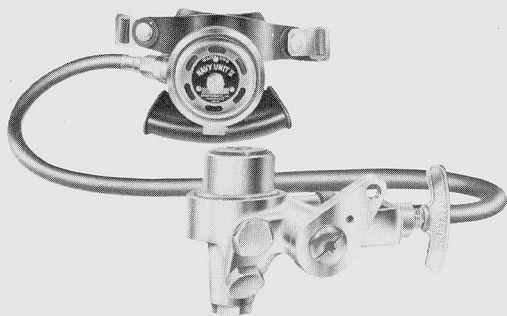
1963

SPORTSWAYS, INC.

7701 EAST COMPTON BOULEVARD
PARAMOUNT, CALIFORNIA



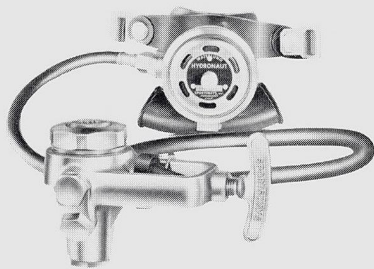
SPORTSWAYS REGULATORS



"NAVY UNIT II"

The first and only single-hose regulator incorporating the original "J" Valve concept. Positive cam-activated, spring-loaded reserve mechanism is an integral part of solid first stage body. All vital parts stainless steel. Second stage employs a refined "downstream" valve design. Moving parts treated with Sportsways Dry-Lube for reduced friction and wear. All "O" ring seals at fittings. Teflon bearings at swivel points.

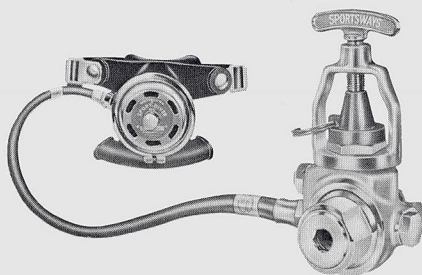
- 1375 "NAVY UNIT II" WATERLUNG REGULATOR \$95.00
- 1376 "NAVY UNIT II" with Sea-View Gauge 114.95
- 1377 "NAVY UNIT II" for use with double tank units 95.00
- 1378 "NAVY UNIT II" use with double tank units with
Sea-View Gauge 114.95
- 1374 "NAVY UNIT II", first stage only 60.00



"HYDRONAUT"

Advanced first stage "balanced-valve" design allows constant pressure and flow regardless of tank pressure. Second stage "downstream" valve delivers 22 cu. ft. of air with an effort too small to be measured. All vital parts made of stainless steel for highest tensile strength. Moving parts coated with the new Sportsways Dry-Lube, an anti-friction agent. The Hydronaut is a new concept in balanced breathing.

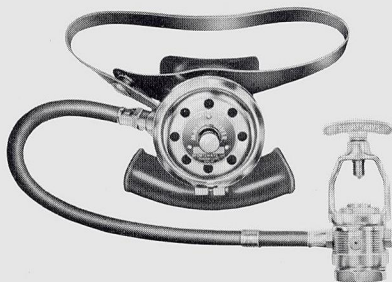
- 1340 "HYDRONAUT" WATERLUNG REGULATOR \$75.00
- 1341 "HYDRONAUT" with Sea-View Gauge \$94.95



"SPORT DIVER"

Exclusive Sportsways design in first stage permits easy access to high-pressure chamber. All fittings "O"-ring pressure seals that meet military specs. Chrome plated throughout. The lightest second stage in the field. Main diaphragm is reinforced nylon, ten times stronger. No adjustment necessary in second stage. Swivel has teflon bearings for smooth action. The new rocker valve design is a "Sport Diver" plus.

- 1301 "SPORT DIVER" WATERLUNG REGULATOR \$49.95
- 1302 "SPORT DIVER" with Sea-View Gauge 69.90



"MALIBU DIVER"

Features incomparable Waterlung performance and workmanship at an economy price. Compact, machined first stage. All fittings have "O" ring seals, fast and easy to remove with no special tools required. Sea-View Gauge connector. Waterlung rocker valve design in the second stage.

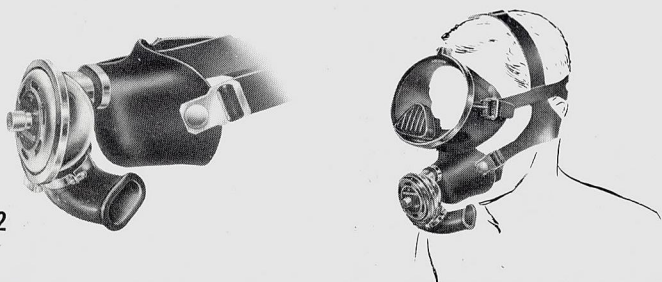
- 1330 "MALIBU DIVER" WATERLUNG REGULATOR \$35.95
- 1331 "MALIBU DIVER" with Sea-View Gauge 55.90



"HYDRO-TWIN"

A new two-hose regulator design featuring solid one-piece forging and refined "downstream" second stage valve design. Oversize demand diaphragm provides super-sensitive response. Stainless steel parts throughout. Additional features include: Sea-View Gauge connector, Hookah attachment, and easy access to high pressure valve.

- 1350 "HYDRO-TWIN" WATERLUNG REGULATOR \$90.00
- 1351 "HYDRO-TWIN" with Sea-View Gauge 109.95



"HYDRO-MASK"

A unique half-face breathing apparatus offering ultimate comfort and unrestricted speech. Made of soft, form-fitting neoprene, the mask adjusts to the lower facial area providing protection from frigid temperatures and dirty water infection. Adaptable to any standard regulator; easy miniature microphone installation.

- 1360 "HYDRO-MASK" \$7.95

TANK VALVES and ACCESSORIES



"SJ" CONSTANT RESERVE VALVE

1102 "SJ" SPRING-LOADED CONSTANT RESERVE VALVE (300 PSI) 1/2" Standard Pipe Thread \$30.00

1112 "SJ" SPRING-LOADED CONSTANT RESERVE VALVE (300 PSI) 3/4" Straight Thread \$30.00

1105 "SK" TANK VALVE 1/2" Std. Pipe Thread . . . \$ 9.95

1115 "SK" TANK VALVE 3/4" Straight Thread . . . \$ 9.95



"SK" SHUT-OFF VALVE



"SJ2" DOUBLE TANK MANIFOLD

1103 "SJ2" DOUBLE TANK SPRING-LOADED CONSTANT RESERVE MANIFOLD (500 PSI) 1/2" Standard Pipe Thread . . . \$49.50

1113 "SJ2" DOUBLE TANK SPRING-LOADED CONSTANT RESERVE MANIFOLD (500 PSI) 3/4" Straight Thread \$49.50



"SK2" DOUBLE TANK MANIFOLD

1120 "SK2" DOUBLE TANK MANIFOLD 1/2" Standard Pipe Thread . . . \$26.50

1121 "SK2" DOUBLE TANK MANIFOLD 3/4" Straight Thread \$26.50

PARTS LIST

1103-01	"SJ2" RESERVE VALVE FOR DOUBLE TANK MANIFOLD 1/2" Standard Pipe Thread . . .	\$27.50
1103-02	"SJ2" DOUBLE TANK YOKE WITH "O" RING SEAL	\$15.00
1103-40	"SJ2" ELBOW FOR DOUBLE TANK MANIFOLD 1/2"	\$ 5.95
1113-01	"SJ2" RESERVE TANK VALVE FOR DOUBLE TANK MANIFOLD 3/4" Straight Thread	\$27.50
1113-40	ELBOW FOR DOUBLE TANK MANIFOLD 3/4"	\$ 5.95

TANK-PACKS

"CAM-PAC II"



SPORTSWAYS EXCLUSIVE CAM-ACTION RELEASE PERMITS MOUNTING ON OR REMOVAL FROM TANK IN SECONDS

All metal construction for maximum durability.

Contoured backplate for comfort in any position. Black anodized finish.

New non-slip screw adjustment on stainless steel tank band.

Comfortable 2" orange nylon web harness.

Adjustable chest strap for snug fit.

New quick release stainless steel buckles.

1207 CAM-PAC II \$19.95

CONTOUR-PACS



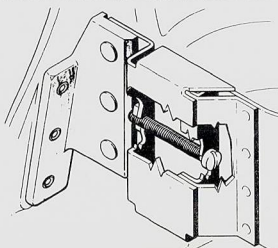
1206 CONTOUR-PAC for double tank assemblies . . . \$19.95

Sportsways Contour-Pacs feature all the comforts and durability of the Cam-Pac II without the cam-action. The metal tank band adjusts for position and tightness by a single galvanized bolt. Harness is orange nylon webbing for strength and rapid drying. Quick release D-ring assemblies throughout.

1205 CONTOUR-PAC for single tank assemblies \$15.00

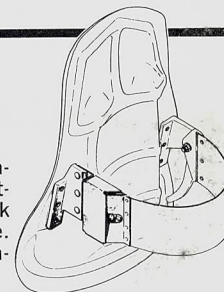
QUICK-RELEASE ASSEMBLIES

Another new Sportsways safety feature for the CAM-PAC II. The quick-release stainless steel wire buckle allows easy handling and rapid disconnect of waist strap.



NON-SLIP SCREW ADJUSTMENT

Safety designed by Sportsways and featured on the Cam-Pac II. Screw adjustment allows easy tightening of the tank band to prevent possible tank slippage. All component parts are made of stainless steel for maximum durability.



TANKS • TANK BLOCKS

All Sportsways Tanks feature the 3/4" opening with "O" Ring Seal Straight Thread—the only system that meets Military Specifications for pressure seals (MIL P-5514). When the tank is empty the valve can easily be removed for visual inspection without special tools. Sportsways Valves have exclusive "Safety Port" that vents off pressure and provides warning, preventing accidental removal when there is air pressure in the tank.

Available with Galvanized exterior finish or in International Orange, the most visible safety color both underwater and on the surface.



1014-01 "SJ" Valve Single Tank Assembly, 71.2 cu. ft., Orange, less Pac \$80.00

1002 Bare Tank, 71.2 cu. ft., Orange \$50.00

1013-01 "SJ" Valve Single Tank Assembly, 71.2 cu. ft., Galv., less Pac \$75.00

1116 Pull Rod, SJ Portable, stainless steel 1.25

1117 Pull Rod, Double Tank, stainless steel 1.25

1204-22 Pull Rod, Cam-Pac, stainless steel 1.25

1320-22 Pull Rod, Navy Unit Dbl, stainless steel 1.25

1012-01 "SK" Valve and Tank 71.2 cu. ft., Orange, less Pac \$59.95

1001 Bare Tank, 71.2 cu. ft., Galv. \$45.00

1011-01 "SK" Valve Single Tank Assembly, 71.2 cu. ft., Galv., less Pac \$54.95



1017 "SJ2" Valve Double Tank Assembly, 71.2 cu. ft., Orange w/ Contour-Pac \$169.45

1016 "SJ2" Valve Double Tank Assembly, 71.2 cu. ft., Galv. w/ Contour-Pac \$159.45

1018 "SK2" Valve Double Tank Assembly, 71.2 cu. ft., Galv. w/ Contour-Pac \$136.45

1025 "SJ2" Valve Double Tank Assembly, 42 cu. ft., Orange w/ Contour-Pac \$155.45

1024 "SJ2" Valve Double Tank Assembly, 42 cu. ft., Galv. w/ Contour-Pac \$145.45

1027 "SK2" Valve Double Tank Assembly, 42 cu. ft., Orange w/ Contour-Pac \$132.45

1026 "SK2" Valve Double Tank Assembly, 42 cu. ft., Galv. w/ Contour-Pac \$122.45



1031-01 "SJ" Valve Single Tank Assembly, 42 cu. ft., Orange, less Pac \$73.00

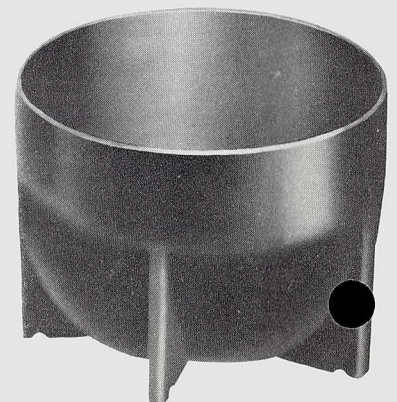
1028-01 "SK" Valve Single Tank Assembly, 42 cu. ft., Galv., less Pac \$47.95

1042 Bare Tank, 42 cu. ft., Galv. \$38.00

1041 Bare Tank, 42 cu. ft., Orange \$43.00

WATERLUNG TANK BOOT

New protective boot slips snugly over the bottom of any standard diameter cylinder. Prevents tank from banging against side of pool or other cylinders. Made of new black synthetic material which will not mark or mar surfaces. Flat bottom allows the cylinder to remain in vertical position.



1050 WATERLUNG TANK BOOT \$4.50

"WATERLUNG" MASK



TWO COMPLETELY DISTINCTIVE MASKS FROM SPORTSWAYS INCORPORATING MORE ADVANTAGES THAN ANY OTHER MASK.

- * High efficiency, non-return exhaust valve for instant clearing, largest possible orifice.
- * Close-to-the-face design for increased vision and minimum displacement.
- * Flat grid exhalation port provides easier equalization.
- * Lens design provides 30% more visibility. Tempered safety glass lens.
- * Extruded foam neoprene sealing edge for a perfect seal and comfort.
- * Deluxe heavy duty mask bands now available in polished chrome or black anodized finish (for salt water use).
- * Comfortable split head strap, adjustable from both sides for secure seal.
- * Hinged head strap buckles adds greater life to head strap.

- 1625 Waterlung mask with polished chrome bands **\$12.95**
 1626 Waterlung mask with black anodized bands, for salt water use **12.95**
 1626-04 Band replacement kit for waterlung mask
 black anodized top and bottom bands, 2 band screws **2.50**



"VISTA-VUE" MASK

Slanted lens design provides better viewing. Shorter top skirt aids sealing during ascent. Stainless steel rim and screw adjustment locks lens in safe position. Tempered safety glass lens, high quality blue rubber compound or black neoprene.

- 1650 "VISTA-VUE"
 French blue **\$4.95**
 1651 "VISTA-VUE"
 Black neoprene **\$4.95**

"EQUALIZER" MASK

Slanted lens "Vista-Vue" design with easy-grip equalizing feature. Deep-set easy-to-reach, double step recessions permit quick pressure relief without breaking face-mask seal. An exclusive Sportsways design.

- 1652 "EQUALIZER" MASK
 French blue **\$5.95**
 1653 "EQUALIZER" MASK
 Black neoprene **\$5.95**

"VISTA-VUE PURGE" MASK

"EQUALIZER PURGE"

NEW WATERLUNG PURGE VALVES

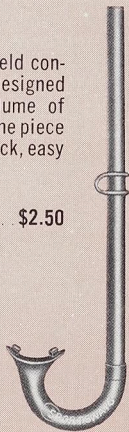
Now you can have either the VISTA-VUE or EQUALIZER Mask with all their individual features, plus the advantages of the exclusive new WATERLUNG PURGE VALVE. The WATERLUNG PURGE VALVE gives you these superior advantages:

- Instantaneous clearing
 - More distinctive
 - High-impact Cyclocac material
 - Larger, more efficient valve
- 1627 "VISTA-VUE PURGE MASK"
 with purge valve, black neoprene **\$5.95**
 1628 "EQUALIZER PURGE" MASK
 with purge valve, black neoprene **\$6.95**

"COMPETITOR" SNORKEL

The only snorkel in the field constructed of neoprene... designed to provide sufficient volume of air under all conditions. One piece moulded elbow allows quick, easy clearing.

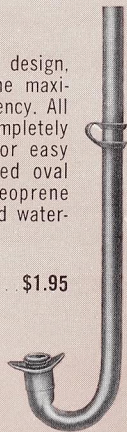
- 1614 Competitor Snorkel **\$2.50**



"MALIBU" SNORKEL

Another new Sportsways design, the "Malibu" affords the maximum in breathing efficiency. All rubber, unbreakable, completely flexible. Constructed for easy clearing. Special formed oval mouthpiece of pure neoprene creates a perfect fit and watertight seal.

- 1622 Malibu Snorkel **\$1.95**



"WATERLUNG" SNORKEL

The most efficient and comfortable snorkel ever developed. Flexible hose design provides complete freedom when inserting or removing mouthpiece. No twisting or pulling. Drops out of the way when not in use. New mouthpiece design has all edges contoured for complete comfort.

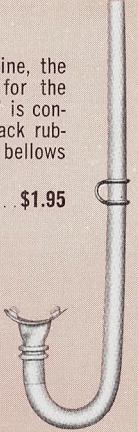
- 1620 Waterlung Snorkel—
 International Orange Tube . . . **\$2.95**
 1621 Waterlung Snorkel—
 Jet Black Tube . . . **\$2.95**



"CATALINA" SNORKEL

New in the Sportsways line, the "Catalina" is designed for the pro diver. The "Catalina" is constructed of the finest black rubber and equipped with bellows mouthpiece.

- 1623 Catalina Snorkel . . . **\$1.95**

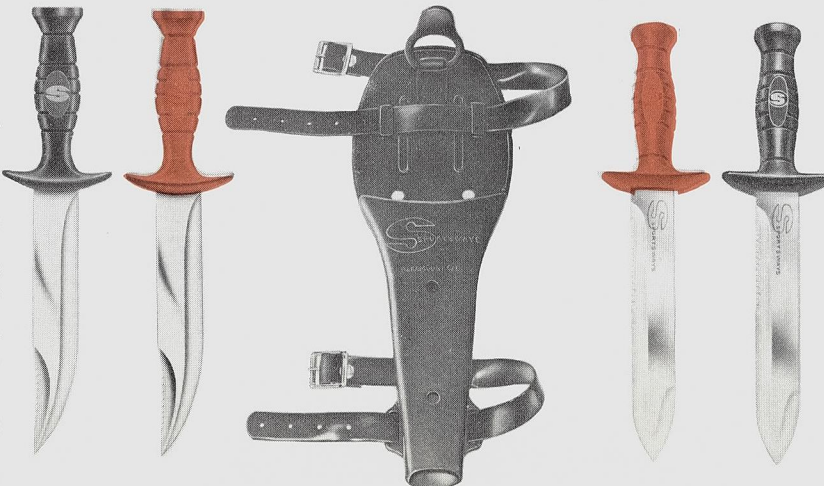


"DIVER" KNIFE and SHEATH

Extremely attractive, completely versatile divers knife.

1. Extra wide 7" specially hardened stainless steel blade.
2. Can be used to pry or as abalone iron.
3. Concave serrated area on opposite edge.
4. Shock resistant one-piece guard and handle. Can be used for pounding.
5. Injection molded salt water resistant leg sheath. Can also be worn on belt.

- 1630 Diver Knife
 (black handle) **\$8.95**
 1640 Diver Knife
 (orange handle) **\$8.95**



"NAVY" KNIFE and SHEATH

Superb knife to meet all requirements—a sturdy working tool.

1. Specially shaped 7" specially hardened stainless steel blade.
2. Full-length cutting edge to tapered point, with large serrated area.
3. Can be used to pry, pound.
4. Shock resistant one-piece guard and handle.
5. Injection moulded salt water resistant leg sheath. Can also be worn on belt.

- 1631 Navy Knife
 (black handle) **\$8.95**
 1641 Navy Knife
 (orange handle) **\$8.95**

WATERLUNG EQUIPMENT FOR

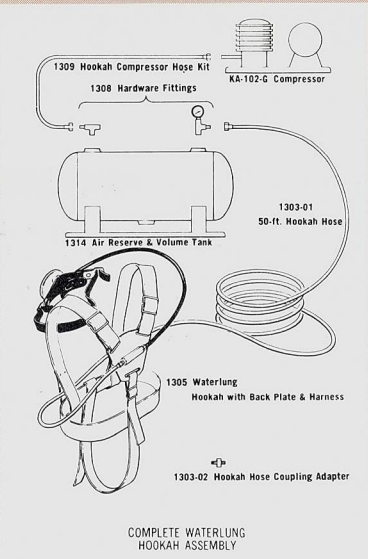
HOOKAH DIVING

A Hookah Unit simply combines the WATERLUNG Regulator and a surface air supply. The unit is connected to a surface air source by a medium pressure hose. Ideal for diving in a limited area for extended periods of time, such as for gold diving or many types of underwater repair and salvage.

1305 WATERLUNG Hookah with Harness and Backplate . . . \$43.00

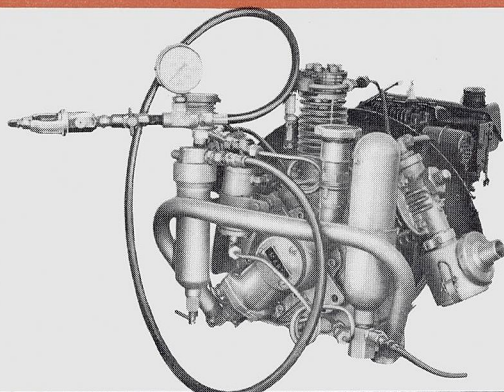
"WATERLUNG" Hookah Unit Accessories

- 1303-01 HOOKAH AIR HOSE (50 ft.) \$27.00
 - 1303-02 HOOKAH HOSE COUPLING 1.95
 - 1314 AIR RESERVE AND VOLUME TANK 30.00
 - 1308 FITTINGS ASSEMBLY 44.00
 - 1309 HOOKAH COMPRESSOR HOSE KIT 8.95
- to connect Hookah Compressor to Air Reserve and Volume Tank (includes: 1 - 1305-09 Hose, 2 - 1305-08 Adaptors)
- KA-102G Complete compressor assembly mounted with gasoline engine, filter and frame. \$300.00
 - 8 CFM at 140 P.S.I. - 750 RPM
 - KA-102 8 CFM compressor only 225.00



HIGH PRESSURE COMPRESSOR

SMALL PORTABLE COMPRESSOR UNITS FOR BOATS, CLUBS AND INDIVIDUAL DIVERS



K-10G Three stage compressor. Gasoline engine. 2500 RPM—2800 PSI—55 lbs. Fills standard tank in 30 minutes. Includes moisture separators, filter, filler hose with yoke and gauge. \$550

NYLO-FORM WET SUITS

SPORTSWAYS NYLO-FORM SUIT

Custom-Fit Quality 3/16" Hood, Jacket, Pants

- 2050 X-Small \$65.00
- 2051 Small 65.00
- 2052 Medium 65.00
- 2053 Large 65.00
- 2054 X-Large 65.00

1/4" Hood, Jacket, Pants

- 2150 X-Small \$69.95
- 2151 Small 69.95
- 2152 Medium 69.95
- 2153 Large 69.95
- 2154 X-Large 69.95



SPORTSWAYS "PERSONALIZE" LETTERS FOR RUBBER EXPOSURE SUITS

Price \$.25 ea. Available in Black, Yellow and Green. Look for "PERSONALIZE" Letter Display at your Dealer. Cat. No. 1584.

NYLO-FORM HOOD 3/16"

- 2611-3 Small \$6.25
- 2612-3 Medium 6.25
- 2614-3 Large 6.25

NYLO-FORM MITT 3/16"

- 2611-5 Small \$4.75
- 2612-5 Medium 4.75
- 2614-5 Large 4.75

NYLO-FORM BOOT 3/16"

- 2611-4 Small \$6.25
- 2612-4 Medium 6.25
- 2614-4 Large 6.25

Deluxe Ski Jacket 3/16" Skin - two sides Nylon Zipper

- 2740 X-Small \$23.50
- 2741 Small 23.50
- 2742 Medium 23.50
- 2743 Large 23.50
- 2744 X-Large 23.50

Deluxe Ski Jacket - Women's 3/16" Skin - two sides Nylon Zipper

- 2750 X-Small \$23.50
- 2751 Small 23.50
- 2752 Medium 23.50
- 2753 Large 23.50
- 2754 X-Large 23.50

SPORTSWAYS "EASY-ON" RUBBER SUIT TALC

Cat. No. 1575 PRICE \$.75

"MAGIC-BOND" FOAM NEOPRENE CEMENT

Cat. No 1576 Black, 4 oz. \$1.00

MEN'S SIZE CHART

WEIGHT	HEIGHT	CHEST	WAIST	SIZE
110 - 125	5'-0" - 5'-4"	32 - 34	27 - 30	X-SMALL
125 - 150	5'-3" - 5'-7"	34 - 36	29 - 32	SMALL
150 - 170	5'-7" - 5'-11"	37 - 39	30 - 33	MEDIUM
170 - 200	5'-11" - 6'-2"	39 - 41	33 - 35	LARGE
205 - 230	6'-1" - 6'-4"	41 - 44	35 - 40	X-LARGE



DIVING WATCHES

WATERLUNG CLEBAR WATCH

Sportsways presents new thinking in diving watch design. The first and only underwater timepiece with an internal bezel for ultimate protection! Bezel turns beneath the pressure-proof crystal by a bevel-gear knob. Completely automatic, 17 jewel, anti-magnetic, shock-resistant, with stainless steel case. Pressure tested for 20 atmospheres — 660 feet!

- 1422 WATERLUNG CLEBAR, black dial.....\$100.00
- 1421 WATERLUNG CLEBAR, white dial..... 100.00

EXPANSION BRACELET

Smartly designed, rust-proof stainless steel for long life under rugged conditions. Satin finish.

- 3080-2 Expansion Bracelet, stainless steel.....\$9.95

Zodiac



SEA SKATE

- 3093-B Black.....\$95.00
- 3093-W White..... 95.00



SEA SKATE SUPREME

- 4005 White.....\$89.50
- 4006 Charcoal..... 89.50



LADIES SEA WOLF

- 2036.....\$100.00



SEA WOLF

- 3080-B Black dial \$100.00
- 3080-W White dial 100.00



SEA WOLF DATOGRAPHIC

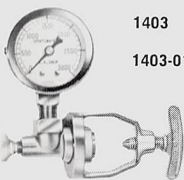
- 1750-B Black.....\$110.00
- 1750-W White..... 110.00

HYDRONAUT FLASHLIGHT



Watertight to 300'. Chromed brass. Adjustable beam. 4 cell standard batteries. Wrist strap attached.

- 1700 Hydronaut Flashlight.....\$19.95



- 1403 Tank Pressure Gauge and Yoke with Bleeder Valve.....\$11.95
- 1403-01 Bleeder Valve Thumb Screw 1.50

TANK PRESSURE GAUGE AND YOKE WITH BLEEDER VALVE

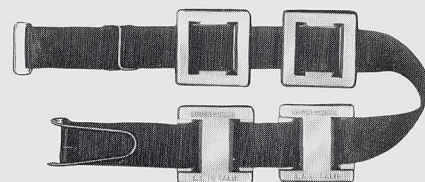


HYDRO-BELT

Airplane type quick-release, all metal buckle. Two-inch orange nylon belt. Stainless steel spring and pivot pin. Black anodized finish. Easy to slip lead weights on and off.

- 1291 Hydro-Belt.....\$4.95

WEIGHT BELTS & ACCESSORIES



- Cat. No. 1286 2" Pro Weight Belt with Eight 1-lb. "Snug-Fit" Weights.....\$11.50
- Cat. No. 1287 2" Pro Weight Belt with Four 3-lb. "Snug-Fit" Weights..... 15.50
- Cat. No. 1289 2" Pro Weight Belt without weights..... 3.95
- Cat. No. 1286-01 "Snug-Fit" 1-lb. Lead Weight (for 2" Belt) \$1.00
- Cat. No. 1287-01 "Snug-Fit" 3-lb. Lead Weight (for 2" Belt) 2.95
- Cat. No. 1286-02 2" Quick-Release Safety Buckle Assembly..... 1.75

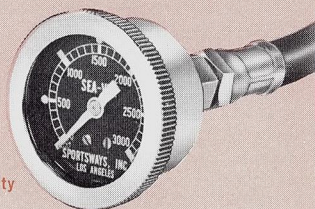
UNDERWATER COMPASS



Completely accurate and easy to read. New design features revolving dome compass for stability. Liquid filled. Durable jet black rubber case and strap.

- 1420 Sportsways Underwater Compass \$3.95

"SEA-VUE" GAUGE

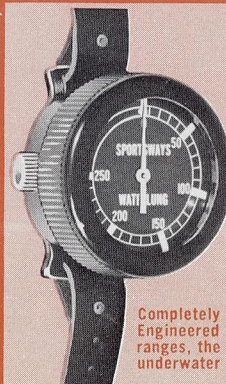


The SEA-VUE GAUGE is the most vital and important instrument ever designed for safety in diving.

Accurately indicates your remaining air supply at all times. Allows you to plan your dive minute to minute. No need to demount regulator to check tank pressure. Waterproof, pressure proof construction. "O" ring seals. Luminous dial. Chrome plated Navy brass case and bezel. Stainless steel braided hose encased in neoprene. Each hose tested at 6,000 P.S.I.

- 1401 Sea Vue Pressure Gauge.....\$19.95

DEPTH GAUGE



1. High impact Cyclocac case for maximum durability.
2. "O" ring seal gauge cap for complete pressure proof seal.
3. Luminous markings and indicator for easy reading.

Completely new original Sportsways design. Engineered for complete reliability. In three ranges, the most accurate and durable in the underwater field.

- 1410 Waterlung Depth Gauge—250 ft. \$9.95
- 1411 Waterlung Depth Gauge—150 ft. 9.95
- 1412 Waterlung Depth Gauge—75 ft. 9.95

WATERLUNG FINS



GIANT
Waterlung Fin

NAVY
FINS

Available in Jet Black
or Floating Navy Gum

WATERLUNG FINS

Cat. No.	Size	Color	Price	Cat. No.	Size	Color	Price
1512 Reg., 4-5		Black	\$ 8.95	1522 Reg., 4-5		Blue	\$ 9.95
1513 Reg., 5½-6½		Black	\$ 9.95	1523 Reg., 5½-6½		Blue	\$10.95
1514 Reg., 7-8		Black	\$ 9.95	1524 Reg., 7-8		Blue	\$10.95
1515 Reg., 8½-9½		Black	\$10.95	1525 Reg., 8½-9½		Blue	\$11.95
1516 Reg., 10-11		Black	\$10.95	1526 Reg., 10-11		Blue	\$11.95
1517 Giant, 11½-13		Black	\$12.95	1527 Giant, 11½-13		Blue	\$13.95
1518 Giant, 13½-16		Black	\$13.95	1528 Giant, 13½-16		Blue	\$14.95

Available in
Jet Black or Floating Blue

Cat. No.	Size	Color	Price
1550 Giant, Medium Large		Black	\$12.95
1551 Giant, Large		Black	\$12.95
1552 Giant, Extra Large		Black	\$12.95
1553 Giant, Super Extra Large		Black	\$13.95
1565 Giant, Medium Large		Gum	\$13.95
1566 Giant, Large		Gum	\$13.95
1567 Giant, Extra Large		Gum	\$13.95
1568 Giant, Super Extra Large		Gum	\$14.95

SPORTSWAYS SPEAR GUNS



The ultimate in spear guns. Developed from exclusive principles for maximum power — unequalled accuracy — complete durability — minimum maintenance. All stainless steel internal parts.

CONSTRUCTION FEATURES: Handle and Muzzle assemblies are specially designed for performance and constructed of high impact resistant Cyclocac... a new concept in spear gun construction which contributes to unequalled ease of handling and durability. This exclusive feature eliminates the problem of internal corrosion once and for all. At the same time, its inherent lightness allows unprecedented maneuverability underwater.

"O" RING SEALS IN BARREL. The first foolproof seal against water and pressure in spear gun history. Permits easy assembly and disassembly of gun. Keeps gun light and maneuverable under all conditions and at all depths. Gun floats after firing.

TRIGGER MECHANISM DESIGN offers several unique, important advantages... leverage system eliminates trigger pull resistance, no matter how many slings are used. Important safety factor... Sportsways guns cannot be accidentally fired from a jolt or bump, as other guns. All Stainless Steel.

black anodized barrel

shock-cord



COCKING STOCK lends balance for more accuracy and quicker handling. Most important, the cocking stock makes "loading" a great deal more comfortable and because of extended leverage, easier, allowing the fisherman to load much more powerful slings. Hence, Sportsways Spear Guns pack much more "punch" than any other gun.

AUTOMATIC LINE RELEASE eliminates drag and veer... carries unlimited amount of line... located in the proper position for quick rigging and out of the way of the hands when firing... permits use of a "break-away" pack when desired.

SHAFT DESIGN. All stainless steel shaft... stainless steel spearheads. Grooved end permits positioning of shaft thereby preventing slipping or rolling when loading. "COMPETITOR" model shafts have notches to accommodate three slings. Pure surgical gum rubber slings for more power, faster action.

MUZZLE DESIGN of famous, proven Cyclocac... cuts the forward weight to a minimum... another Sportsways first! Complete accuracy! Allows quick sling changes... accommodates up to three slings... allows more variable in power than any other gun... includes "sight" and line holder.

1635	"COMPETITOR" SPEAR GUN with Stainless Steel, Two Barb Spearhead	\$27.50
1635-25	SLING (long) 21" Competitor	2.50
1635-28	SHAFT (long) S.S. Competitor	7.50
1636	"SPORTSMAN" SPEAR GUN with Stainless Steel, Single Barb Spearhead	19.95
1636-25	SLING (short) 13" Sportsman	2.00
1636-28	SHAFT (short) S.S. Sportsman	6.50
1635-3	MUZZLE	1.50
1635-50	GRIP Complete (assembled)	12.95



TWO-BARB SPEARHEAD

stainless steel, retractable

1635-52... 3.95



DETACHABLE POINT COMBINATION KIT

3" Tri-cut head, threaded adaptor, nylon cable

1635-58... 5.95



SINGLE BARB SPEARHEAD

stainless steel

1636-51... 1.95

"NAVY" SAFETY VEST

New rugged material. Nylon impregnated with neoprene. Meets Navy specifications. Impervious to salt water, sun, snags. The most durable material ever. Sure-fire inflation mechanism made to military specifications. Fool-proof screw-in military type CO₂ cartridges. Replaceable. Leakproof oral inflation tube with manual shut-off for added safety. Tube can be used to vent off excessive pressure. Exclusive "Center-zip" design eliminates bulk. Easy donning and exit. Head is kept out of water.

Detonator on reverse side eliminating possibility of entanglement.

1800	Navy Safety Vest	\$19.95
1800-32	Inflation mechanism	5.00
1800-35	Cartridge, 12 gram CO ₂ screw-in	.75



SAFETY VEST REPAIR KIT

For the first time Sportsways offers a repair patch kit for the nylon safety vest. This kit consists of cement, applicator, and nylon fabric patches.

1800-38 SAFETY VEST REPAIR KIT \$2.50



1481



1480

1480 Waterlung Divers Flag, 12"x15", 36" mast. Clamps to any size inner tube... \$6.95

1481 Waterlung Flag Buoy 12"x15" flag, 48" mast, counter weight and tow harness... \$7.95